

WELCOME

The Minnesota Historical Society, the James J. Hill Papers and the James Jerome Hill Reference Library, the Ramsey County Historical Society and the Hennepin County Historical Society invite you to Minnesota's Twin Cities for the Twelfth Annual Conference of the Society for Industrial Archeology. At the historic head of navigation on the Mississippi River, St. Paul served as the gateway to the Upper Midwest. Minneapolis made its reputation as the saw-milling and then flour-milling capital of the world. Today both cities boast a thriving and diversified industrial base with rich industrial archeology still readily accessible.

"JUST US GEEKS A' GAWKIN'"

At the airport: In the Red Concourse are manufacturing-process exhibits for Nordic Ware (aluminum cladding) and Diamond Tool Corp. and other firms a few yards down the ramp. Commercial archeology enthusiasts will enjoy the Northwest Orient sign painted on the end of a hanger visible from the exit ramp from the terminal. The sign is reputedly the world's largest advertisement.

Accessible from the hotel by bus or cab: J.A. Wind Sheetmetal Works, 157 Grand Ave. at West 7th St., a vernacular commercial/industrial archeology survival; William Marvy Co., virtually the last U.S. manufacturer of barber poles, 1540 St. Clair, St. Paul; Ace Seven Corners Hardware, 216 West 7th St., St. Paul, surely one of the best serious hardware stores in the country.

AND FOR THE "WON'T GO HOMES"

Take a day trip to Duluth, head of Great Lakes navigation. If Amtrak still runs the train, you can get to Duluth and back in a day with six hours to explore the Lake Superior Transportation Museum, Lake Superior Maritime Museum, and the Aerial Lift (formerly transporter) Bridge (1905-1929).

GENERAL INFORMATION

CONFERENCE MATERIALS

At the Conference, registrants will receive the Conference Program, the Conference poster, a bound guide to the industrial archeology of the Twin Cities, abstracts of papers, checklists of commercial archeology in the Twin Cities and National Register IA sites in Minnesota, a bibliography of Minnesota IA, a self-guiding tour brochure for the area immediately around the headquarters hotel, a jogger's guide to IA sites in downtown St. Paul, a guide to local eateries, and a list of registrants.

MAPS

Conference registrants wishing to refer to the appropriate USGS maps should bring the following titles in the 7 1/2-minute series: Minneapolis North (current to 1980), New Brighton (1980), White Bear Lake West (1980), Minneapolis South (1967), St. Paul West (1967), and St. Paul East (1980). Three and a half blocks from the Radisson St. Paul is The Map Store (336 N. Robert St.) located in an important Solon S. Beman office building (1888-89); take the original open elevator up the atrium. The Store carries the complete USGS coverage for Minnesota in both scales.

HOTEL

The headquarters hotel, the Radisson St. Paul, offers a spectacular view of St. Paul's riverfront. A suite overlooking the river will serve as social center for the Conference. Buffet breakfasts will be available beside the pool each morning. Airport limousines serve the Radisson St. Paul. Do not confuse the headquarters hotel with the nearby Radisson Plaza.

MEETING FACILITIES

Saturday paper sessions will be held in Landmark Center, the newly restored Federal Courts Building (1894-1904). Sunday paper sessions will be held in the headquarters hotel, the Radisson St. Paul.

CHILD CARE

Day care can be arranged at the YWCA one block from the hotel. Evening child care could be arranged at the hotel. Cost will depend on demand. If you need child care, please contact Virginia Westbrook, 1000 Laurel Ave., St. Paul, Minn. 55104 or call (612) 225-2097 by April 15. Children under the age of 12 will not be allowed on the process tours on Friday.

DRESS

Sturdy shoes are required. Open-toed shoes and sandals will not be permitted on the tours. Warm clothing is advised in May in Minnesota.

CONFERENCE LOCATIONS

Radisson St. Paul Hotel
11 E. Kellogg Blvd. at Wabasha
St. Paul, Minn. 55101
(800) 228-9822

Landmark Center
Fifth and Market Sts. (north side of Rice Park)
St. Paul 55102
(612) 292-3225

James Jerome Hill Reference Library
Fourth and Market Sts. (south side of Rice Park)
St. Paul 55102
Library: (612) 227-9531
Hill Papers: (612) 227-3339

Minnesota Historical Society (Libraries and Museum)
690 Cedar St.
St. Paul 55101
(612) 296-6126

James J. Hill House (MHS)
240 Summit Ave.
St. Paul 55102
(612) 296-8205

Minnesota Historical Society
Research Center—Division of Archives & Manuscripts
1500 Mississippi St.
St. Paul 55101
(612) 296-6980

Saturday River Cruise
Jonathan Padelford at Harriet Island Landing
over Wabasha St. Bridge and turn right onto Nagasaki Road

SIA OFFICERS

Patrick M. Malone, Slater Mill Historic Site
President

Larry D. Lankton, Michigan Technological University
Vice President

Michael B. Folsom, Charles River Museum of Industry
Secretary

Marlene Nicholson, Barclays/American Corporation
Treasurer

Robert M. Vogel, National Museum of American History
Past President

Charles Emmerich, Mechanical Engineer
Paul J. McGinley, Anderson, Notter, Finegold, Inc.
Matthew W. Roth, Industrial History Consultant
Eric N. DeLony, Historic American Engineering Record
David R. Starbuck, Rensselaer Polytechnic Institute
Helena Wright, Merrimack Valley Textile Museum
Thorwald Torgersen, Teacher
Directors

1983 CONFERENCE PLANNING COMMITTEE

Robert M. Frame III, James J. Hill Papers
Timothy C. Glines, Minnesota Humanities Commission
Nicholas Westbrook, Minnesota Historical Society
Virginia M. Westbrook, Museum Consultant
John Wickre, Minnesota Historical Society

For additional pre-conference information and conference registration form call John Wickre, (612) 296-6980.

Conference materials by John Palmer Low/Design.

SOCIETY FOR INDUSTRIAL ARCHEOLOGY
Room 5020
National Museum of American History
Smithsonian Institution
Washington, D.C. 20560

SAINT PAUL & MINNEAPOLIS, MINNESOTA MAY 12-15, 1983

SOCIETY FOR INDUSTRIAL ARCHEOLOGY
CONFERENCE
ANNUAL
TWELFTH

Robert Street Bridge (St. Paul) over Mississippi River (NR), 1926. Toles, King, and Day, Inc., engineers, MHS.



SAINT PAUL & MINNEAPOLIS, MINNESOTA MAY 12-15, 1983

SOCIETY FOR INDUSTRIAL ARCHEOLOGY
CONFERENCE
ANNUAL
TWELFTH

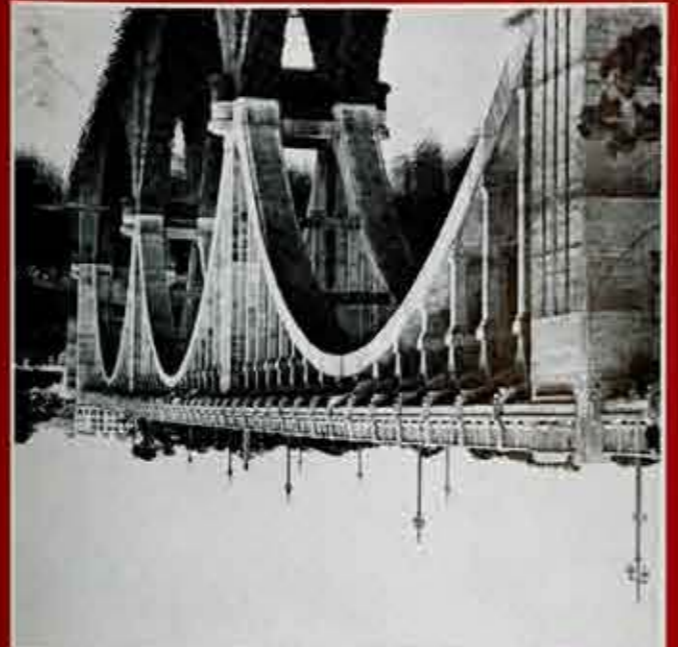
Mendota Bridge over Minnesota River (NR), 1925-26. Walter H. Wheeler and C.A. Turner Company Associates, engineers, MHS.



SAINT PAUL & MINNEAPOLIS, MINNESOTA MAY 12-15, 1983

SOCIETY FOR INDUSTRIAL ARCHEOLOGY
CONFERENCE
ANNUAL
TWELFTH

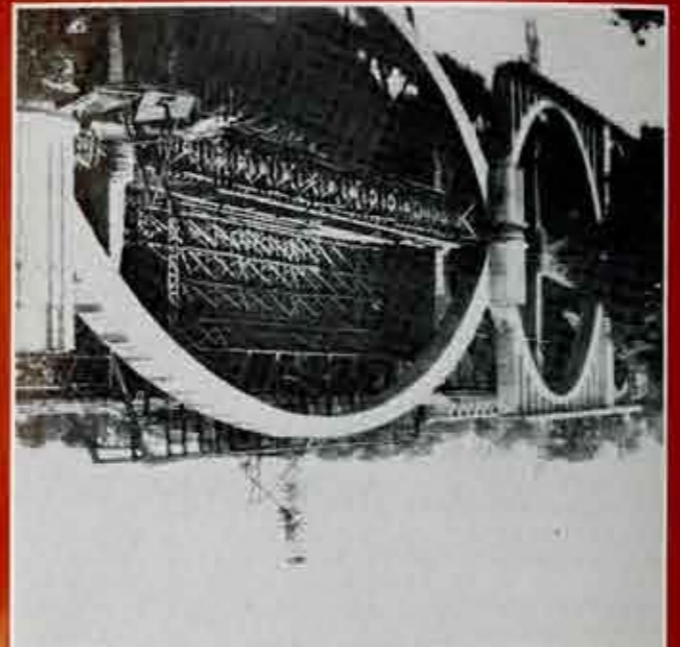
Inter-City (Ford) Bridge over Mississippi River, 1926. George M. Shepard and N. W. Eisberg, engineers, MPL/MHC.



SAINT PAUL & MINNEAPOLIS, MINNESOTA MAY 12-15, 1983

SOCIETY FOR INDUSTRIAL ARCHEOLOGY
CONFERENCE
ANNUAL
TWELFTH

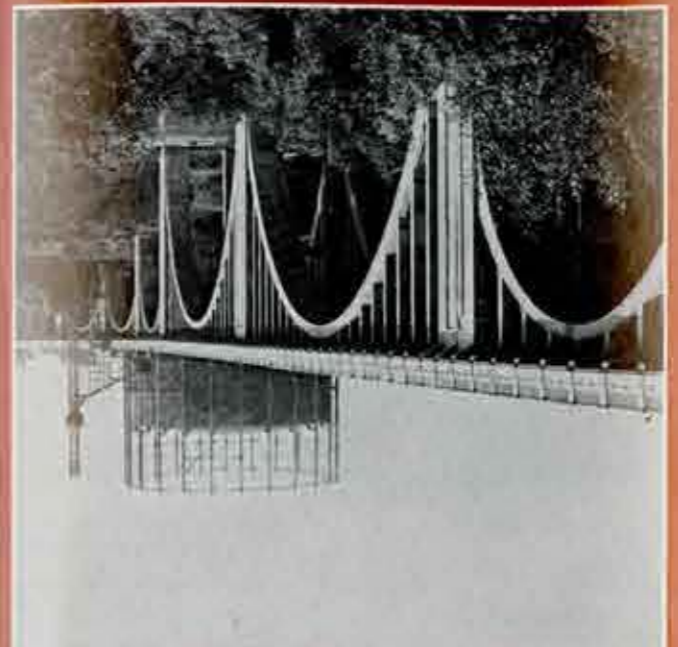
Cappelen Memorial (Franklin Avenue) Bridge over Mississippi River (NR), 1919-23. Frederick William Cappelen and Kristoffer Olsen Oustad, engineers, MPL/MHC.



SAINT PAUL & MINNEAPOLIS, MINNESOTA MAY 12-15, 1983

SOCIETY FOR INDUSTRIAL ARCHEOLOGY
CONFERENCE
ANNUAL
TWELFTH

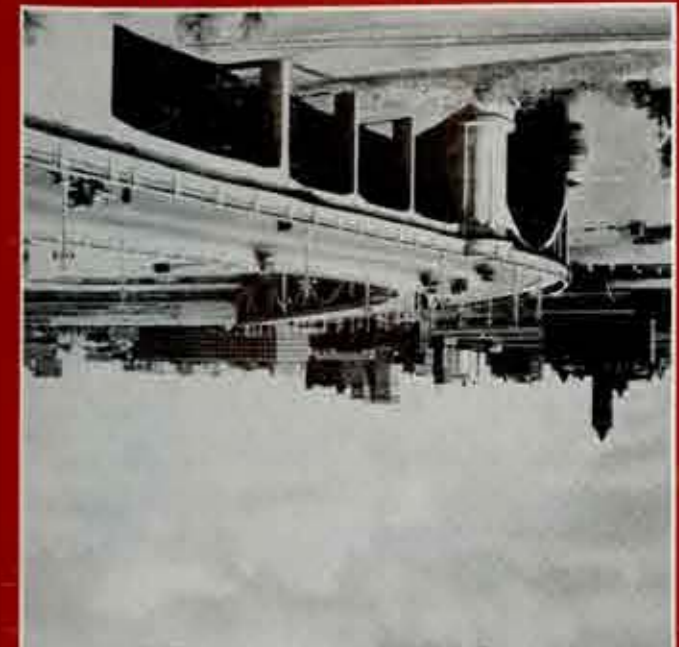
Cedar Street Bridge (Minneapolis) over Mississippi River, 1929. N. W. Eisberg, engineer, MHS.



SAINT PAUL & MINNEAPOLIS, MINNESOTA MAY 12-15, 1983

SOCIETY FOR INDUSTRIAL ARCHEOLOGY
CONFERENCE
ANNUAL
TWELFTH

Third Avenue Bridge (Minneapolis) over Mississippi River (NR), 1918. Frederick William Cappelen, engineer, MPL/MHC.



THURSDAY

Noon-7:30pm Registration in the lobby of Radisson St. Paul

Workshops

1-3pm IA in the Classroom

For college teachers: The Minnesota Historical Society hosts at the James J. Hill House an informal roundtable discussion of the problems and opportunities in teaching IA. Just how helpful are museums as resources in teaching IA? Can an IA course be taught without a field trip experience? Michael Folsom (Charles River Museum) chairs a session which will also include Larry Lankton (Michigan Tech.), David Starbuck (RPI), Charles Hyde (Wayne State), and others.

3-4pm IA in the Classroom

For elementary and secondary teachers: Also at the Hill House will be a workshop for elementary and secondary social studies teachers and curriculum planners to explore ways of teaching the history of work. Workshop leaders David Weitzman and Michael Folsom will introduce the SIA-developed national curriculum, "'Don't You Hear the Whistle Blowin?': the History of Work in America."

3:30-5pm IA in the Archives

The Minnesota Historical Society will offer an informal workshop on archival sources in IA at the Research Center of the Society's Division of Archives and Manuscripts. Featured will be more than 3 linear miles of Great Northern and Northern Pacific Railway records. A 1953 GMC bus which helped to lift the Twin Cities' rapid transit off its rails, now restored and operated by the Minnesota Transportation Museum, will leave from the Kellogg Ave. entrance of the Radisson at 3:15pm. A shuttle will leave the Research Center and return to the hotel at 5pm.

DINNER On your own. See the Eateries guide.

7:00pm Welcoming Reception—James J. Hill House

The Minnesota Historical Society hosts a reception for conference registrants. Tours of this 1891 National Historic Landmark mansion, built by Great Northern Railway "Empire Builder" James J. Hill, will be a special feature of the evening. A slide-presentation will provide an introduction to the industrial history of the Twin Cities, offering a context for sites visited on the Friday and Saturday tours. Shuttle buses will be provided.

FRIDAY

7-8:15am Registration in the lobby of Radisson St. Paul

8:15am-5pm Process Tours

Buses depart Radisson St. Paul from the Kellogg Blvd. entrance.

Twin City Shipyard, Inc., St. Paul: A wholly-owned subsidiary of Twin City Barge, Inc., the shipyard, completed in 1973, manufactures barges for the river and coastal trade. We should be able to see some of the company's split-hull hopper barges and portable barges as well as standard hopper barges.

Greif Brothers Corporation, Norco Division, St. Paul: Located in a nineteenth-century building formerly used to manufacture iron stoves, Greif Brothers' coo-perage is one of the few remaining facilities to make tight ("wet") barrels. Most of the equipment used dates from the turn of the century.

Ford Motor Company's Twin Cities Assembly Plant, St. Paul: Designed by Alfred Kahn and completed in 1925, this facility was part of Henry Ford's plan to decentralize automobile production. Our tour will include the company's contemporaneous hydro plant, at the adjacent Mississippi River High Dam (1917), which supplies all the electrical power needed at the Plant.

Minneapolis Cereal Plant of Nabisco Brands, Inc.: Historically known as the Cream of Wheat Company building (1927), the plant processes cooked breakfast cereal. Paintings from Nabisco's two-million dollar collection of original Cream of Wheat advertising art will be on display.

Confirmation of other tour sites is incomplete, but registrants can anticipate being able to visit at least one significant operating grain elevator and perhaps a railroad facility.

Most tours will be to "working" industrial facilities. To avoid imposition to our hosts, it may be necessary to limit the number of people visiting certain sites.

Lunch will be provided. Pre-registration is required.

4:30-6:30pm Registration in the lobby of Radisson St. Paul

6:30-11pm Mississippi River Banquet Cruise

Board the boat at 6:30pm for a dinner cruise on the Jonathan Padelford stern-wheeler (125' long, 24' beam, built 1970). The river-level view of the St. Paul waterfront includes the American Hotel and Derrick plant (1896-), the Grain Terminal Association reinforced-concrete Elevator (1916+) and municipal loading facility and Minnesota Harbor Services' barge cleaning operation. We will cruise under six historic bridges over the Mississippi and pass twice through Mississippi River Lock #1 at the Ford Dam. SIA-narrated tour; cash bar; catered dinner. Pre-registration required. Limit: 250 people. Dress warmly.

SATURDAY

8-10:30am Registration in the Cortile of Landmark Center

8:30am-Noon Paper Sessions

8:30-10am

Bridges

Landmark Center: Weyerhaeuser Auditorium

Chair: Donald C. Jackson,
Historic American Engineering Record, Washington, D.C.

RAILROAD BRIDGE CONSTRUCTION OVER THE MISSISSIPPI AND MISSOURI RIVERS TO IOWA, 1856-1930.

—Hans Muessig and Martha H. Bowers,
Dennett, Muessig & Assoc., Ltd., Iowa City, Iowa.

MONTANA'S MINNEAPOLIS BRIDGE BUILDERS.

—Fredric L. Quivik, Renewable Technologies, Inc., Butte, Mont.

THE GROTON IRON BRIDGE COMPANY.

—Pamela Jo Thurber, Cornell University, Ithaca, N.Y.

Industrial Archeology in the Rural Setting

Landmark Center: Ramsey County Room (317)

Chair: Edward Rutsch,
Historic Conservation & Interpretation, Inc., Newton, NJ.

LOGGING DAMS AS A SAMPLE OF "FOLK TECHNOLOGY" IN A PERIOD OF TECHNOLOGICAL ADVANCEMENT IN THE LAKE STATES LUMBER INDUSTRY.

—John N. Vogel, U.S. Forest Service Cultural Resource Survey,
Hiawatha National Forest.

EXCAVATION OF A 19th CENTURY POTTER'S SHOP IN CONCORD, NEW HAMPSHIRE.

—David R. Starbuck, Rensselaer Polytechnic Institute, Troy, N.Y.

Midwestern Industries I: Potash and Paper

Landmark Center: Sanborn Room (408)

Chair: George Green, University of Minnesota, Minneapolis, Minn.

NEBRASKA'S WORLD WAR I POTASH INDUSTRY.

—Richard E. Jensen, Nebraska State Historical Society, Lincoln, Neb.

THE PAPER INDUSTRY IN THE FOX RIVER VALLEY REGION OF WISCONSIN: TWO LATE 19th CENTURY SITES.

—Paul P. Abrahams, University of Wisconsin-Green Bay, Green Bay, Wis.

10:30am-Noon

Oil

Landmark Center: Weyerhaeuser Auditorium

Chair: Vance Packard, Drake Well Museum, Titusville, Pa.

OIL SPRINGS PETROLEUM WELLS, ONTARIO, CANADA, 1860-PRESENT: AN INDUSTRIAL ARCHEOLOGY CASE STUDY.

—Dianne Newell, University of British Columbia, Vancouver, B.C.

TURNER VALLEY OILFIELD, CANADA, IN THE 1930s AND TODAY: THE ARCHEOLOGICAL POTENTIAL.

—David Finch, University of Calgary, Calgary, Alta.
Session will include vintage 1930s film of Turner Valley Oilfield in operation.

Urban Affairs: History, Preservation, and Public Policy

Landmark Center: Ramsey County Room (317)

Chair: Eric N. DeLony,
Historic American Engineering Record, Washington, D.C.

GRAND CENTRAL AND MIDTOWN: HOW A RAIL TERMINAL RESHAPED MANHATTAN.

—Elliot Willensky, Landmarks Preservation Commission, New York City.

URBAN RENEWAL AND THE INDUSTRIAL ARCHEOLOGY OF DETROIT: SOME LESSONS OF THE PAST FEW YEARS.

—Charles K. Hyde, Wayne State University, Detroit, Mich.

SATURDAY

Midwestern Industries II: Beet Sugar

Landmark Center: Sanborn Room (408)

Chair: A. C. Bloomquist, American Crystal Sugar Co., Moorhead, Minn.

THE BEET SUGAR INDUSTRY IN NEBRASKA.

—William F. Rapp, Railroad Station Historical Society, Crete, Nebr.

AMERICAN CRYSTAL SUGAR COMPANY IN THE EARLY 20th CENTURY: THE OXNARD ERA.

—James E. Fogerty, Minnesota Historical Society, St. Paul, Minn.

Noon-12:45pm Lunch

Gladstone Cafe, Landmark Center Cortile. Soup, sandwich, and beverage. Pre-registration required.

12:45-1:30pm Annual Business Meeting

Weyerhaeuser Auditorium, Landmark Center. President Malone will preside over a session which will feature a slide preview of the 1983 Fall Tour of mining sites in Colorado by Peter Molloy, Western Museum of Mining and Industry.

1:30-5:30pm

Tour of Minneapolis Flour-Milling District at the Falls of St. Anthony

Rain or shine, buses will depart for Minneapolis from the 5th St. (Rice Park) side of Landmark Center immediately following the annual business meeting. On arrival at the Falls of St. Anthony on the Mississippi River, smaller groups will be formed for a combined bus and walking tour of both East Side (Pillsbury) and West Side (Washburn, Crosby; later General Mills) milling districts.

We will walk or drive past all the significant structures in this world-famous water-power and milling location, including: **East Side Milling District:** Pillsbury "A" Mill (1881; National Landmark); Martin & Morrison Blocks/Union Iron Works (1858, 1870s); Upton Block (1855); Main Street Power Station (rope drive; 1911); University of Minnesota Hydraulic Laboratory (1938); Twin Cities Rapid Transit Co. Hydroelectric Plant (1897) and Steam Station (1903); Hennepin Island Hydroelectric Plant (1908). **West Side Milling District:** Washburn "A" Mill (1879; National Landmark); Humboldt Mill (1878); Standard Mill (1879); Crown Roller Mill (1880); North Star Woolen Mill (1860s-1870, 1925); Northwestern Consolidated Elevator "A" (1908); Hall & Dann Barrel Factory (1890-1906); James J. Hill Stone Arch Bridge (1882-3); Minneapolis Eastern Engine House (1914); Milwaukee Road Station, Train Shed, and Freight House (1879-1906); Third Ave. Bridge (1917-8); Upper Lock and Dam (1961-3); and ruins of the power canal and railroad trestling. Buses will leave the Falls of St. Anthony in time to arrive back at the Radisson St. Paul by 5:30pm.

5-7pm Prairie Home Companion, alas. . .

As this program goes to press, we learn that PHC goes on tour for the month of May. Lake Wobegon pilgrims can listen to the live show on Minnesota Public Radio (91.1 FM) and visit the World Theater.

Dinner is on your own. See the Eateries guide.

7-8:30pm Reception and Open House at Hill Reference Library.

The James Jerome Hill Reference Library and the James J. Hill Papers host a reception for conference registrants. Hospitality, drink, and food courtesy of the Hill Reference Library.

8-10pm Films and Informal Slide Presentations

Weyerhaeuser Auditorium, Landmark Center. Bring slides of your IA research projects to share with others.

8pm+ SIA Board of Directors Meeting

Pioneer Suite, Radisson St. Paul, Lower Level

SUNDAY

8:30am-3pm Paper Sessions

8:30-10pm

Northern IA: Regional Work-In-Progress Reports

Radisson: Pioneer Suite

Chair: Robert A. Britton, Science Museum of Minnesota, St. Paul, Minn.

A TALE OF TWO TOWERS: LOCATION AND ENGINEERING ASPECTS OF THE WASHBURN PARK WATER TOWERS IN MINNEAPOLIS.

—Tom Balcom, Minn. Dept. of Natural Resources and Mill City History Assoc., Twin Cities.

IRON AND STEEL TRUSS BRIDGES IN EASTERN IOWA.

—James C. Hippen, Luther College, Decorah, Iowa.

C.A.P. TURNER AND THE CONSTRUCTION OF THE NORTHWESTERN KNITTING MILL, MINNEAPOLIS.

—Jeffrey A. Hess, Historian, Minneapolis, Minn.

UNCERTAIN FUTURES IN ST. PAUL: THE NORTHERN PACIFIC RAILWAY'S COMO SHOPS AND THE GREAT NORTHERN RAILWAY'S JACKSON STREET SHOPS.

—Nancy Tracy, Historian, St. Paul, Minn., and Frank P. Bifulk, Minnesota Transportation Museum, Twin Cities.

Mining I: Archeology, Preservation, and Geography

Radisson: Senate Suite

Chair: Peter M. Molloy,
Western Museum of Mining and Industry, Colorado Springs, Colo.

RECORDING AND RECOVERY OF TWO STEAM-POWERED ROTARY CORE DRILLS FROM AN EARLY MINING SITE IN NORTHERN SASKATCHEWAN.

—David Neufeld, Energy Conservation Information Centre, Saskatoon, Sask.

THE FEDERAL (LEAD COMPANY) MILL COMPLEX, FLAT RIVER, MISSOURI.

—Gary Wairath, Missouri Dept. of Natural Resources, Festus, Mo.

TIME EXPOSURES: A CENTURY OF CHANGE IN ARIZONA'S WARREN MINING DISTRICT (BISBEE) AS DEPICTED IN FIVE MAPS.

—Richard V. Francaviglia,
South-Eastern Arizona Governments Organization, Bisbee, Ariz.

Industrial Archeology Theory and Method

Radisson: Indian Suite

Chair: Dianne Newell, University of British Columbia, Vancouver, B.C.

MANUFACTURING METHODS DEDUCED FROM THE STUDY OF INDUSTRIAL ARTIFACTS.

—Robert B. Gordon, Yale University, New Haven, Conn.

THE BUILDING AS DOCUMENT: IDENTIFYING THE WORKERS' HABITS.

—Ann M. Matthews, Watkins Woolen Mill, Lawson, Mo.

10:30am-Noon

Steam Engine Restoration: Practice and Projects

Radisson: Pioneer Suite

Chair: Matt Roth, Historic Resources Consultants, Hartford, Conn.

THE PRACTICE OF HISTORIC PRESERVATION OF THE RECIPROCATING STEAM ENGINE.

—Gerald G. Parker, Steam Engineer, Fargo, N.Dak.

STEAM RESTORATION PROJECTS AT THE MINNESOTA TRANSPORTATION MUSEUM: NORTHERN PACIFIC LOCOMOTIVES 328 AND 215A.

—Bill Graham, Minnesota Transportation Museum, Twin Cities.

A TURN FOR THE BETTER: THE REACTIVATION OF THE ARMINGTON & SIMS STEAM-POWERED MACHINE SHOP AND FOUNDRY AT GREENFIELD VILLAGE.

—John L. Bowditch,
Henry Ford Museum & Greenfield Village, Dearborn, Mich.

SUNDAY

Mining II: Perspectives on Copper

Radisson: Senate Suite

Chair: Larry Lankton, Michigan Technological University, Houghton, Mich.

FROM LIMERICK TO SWEDETOWN: RESIDENTIAL LOCATIONS IN THE SUPERIOR COPPER DISTRICT.

—Patrick E. Martin, Michigan Technological University, Houghton, Mich.

THE ANACONDA COMPANY SMELTERS AT ANACONDA AND GREAT FALLS.

—Fredric L. Quivik, Renewable Technologies, Inc., Butte, Mont.

RESEARCH POTENTIAL OF THE ANACONDA COPPER MINING COMPANY RECORDS.

—Ellen H. Argimbau, Montana Historical Society, Helena, Mont.

IA Soft-ware: Rope, Cloth, Grain

Radisson: Indian Suite

Chair: David H. Shayt,
National Museum of American History, Washington, D.C.

AT THE END OF THEIR ROPE IN CHATHAM DOCKYARD.

—Carolyn C. Cooper, Yale University, New Haven, Conn.

TEXTILE FACTORIES IN CHINA: A CONTEMPORARY LOOK.

—Marcia G. Anderson, Minnesota Historical Society, St. Paul, Minn.

THE RISE AND DECLINE OF THE WOODEN GRAIN ELEVATOR.

—T. Robert Talbot, National Agra Underwriters, Camp Hill, Pa.,
Robert Talbot, Laconia, N.H.

Lunch will be on your own.

1:30-3pm

Mill Project Reports: Investigation, Interpretation, Restoration

Radisson: Pioneer Suite

Chair: Charles Howell,
Philipsburg Manor Mill, Tarrytown, N.Y.

MINNEAPOLIS'S WEST SIDE MILLING DISTRICT AND THE CATARACT MILL SITE: A PROPOSAL FOR INDUSTRIAL ARCHEOLOGY.

—Diane Adams and Jerilee Richtman,
University of Minnesota, Minneapolis, Minn.

INVESTIGATING THE SEPPMANN WINDMILL RUINS: UNDERSTANDING THE ENGINEERING AND THE CONSTRUCTION OF A THREE-DIMENSIONAL INTERPRETIVE MODEL. Model will be on display.

—Kenneth Sander, Science Museum of Minnesota, St. Paul, Minn.
Session may include screening of the film "The Mill at Philipsburg Manor", with commentary by Charles Howell.

The Industrial House: A Roundtable on Approaches and Examples

Radisson: Indian Suite

Chair: Michael J. Crosbie, *AIA Journal*, Washington, D.C.

PREFABS FOR THE PRAIRIES.

—Thomas Harvey, University of Minnesota, Minneapolis, Minn.

HIGH ART AND MASS PRODUCTION IN TURN-OF-THE-CENTURY BUILDING TECHNOLOGY.

—Paul Clifford Larson, Architectural Historian, Long Lake, Minn.

SOME POST-WORLD WAR I EXAMPLES OF BUILDINGS BY THE AMERICAN ARTSTONE COMPANY OF NEW ULM, MINNESOTA.

—Dennis Gimme stad, Minnesota Historical Society, St. Paul, Minn.

VERNACULAR HOUSES AS INDUSTRIAL ARCHEOLOGY ARTIFACTS.

—Herbert Gottfried, Iowa State University, Ames, Iowa.

FROM PROFESSIONAL TO AMATEUR: CHANGING DESIGN IN TOOLS FOR HOME BUILDING.

—Michael J. Crosbie, *AIA Journal*, Washington, D.C.

3pm The Twelfth Annual SIA Conference Concludes.