

SOCIETY FOR  
INDUSTRIAL  
ARCHEOLOGY

---

## 45<sup>th</sup> Annual Conference, Kansas City, Missouri June 2-5, 2016

The 2016 Annual SIA Conference will take place in Kansas City, Missouri, located at the bend of the Missouri and Kansas Rivers. Officially incorporated in 1853, 32 years after the state of Missouri was admitted to the Union, the city was initially called “The Town of Kansas” after the Kansa Indians who lived in the area.

Kansas City has a rich history in Missouri River trade, outfitting for wagon freighting on the Santa Fe and Oregon trails, and agriculture and milling. With the first crossing of the Missouri River in Kansas City in 1869—that of the Hannibal Bridge—Kansas City became a major player in the livestock industry and by the 1880s, ten rail lines delivered stock to the industrial area known today as the West Bottoms. The Kansas City Livestock Exchange was the “largest building in the world devoted exclusively to livestock interests.”

Today, Kansas City remains second only to Chicago as the “busiest train center in the country.” The city’s varied history also includes that of TWA, the work of the bridge engineer J.A.L Waddell and successor firms, Walt Disney, the Kansas City Monarchs, Kansas City Jazz, George Kessler’s renowned Parks and Boulevards system, and the National World War I Museum at Liberty Memorial.

### **SCHEDULE AT A GLANCE**

#### **Thursday, June 2**

- Pre-conference tours\*
- Welcome Reception for New Members
- Evening Reception and orientation at conference hotel
- Dinner on your own

#### **Friday, June 3**

- Choose one of five all-day bus tours
- Dinner on your own
- SIA Industrial Film Festival

#### **Saturday, June 4**

- Full day of research presentations & exhibits
- Annual Business Meeting & Luncheon
- SIA Banquet\*

#### **Sunday, June 5**

- Post-conference tours\*



Union Depot in Kansas City, Union Depot, which opened in April 1878 in an area now known as West Bottoms. Source: Wikipedia

\* Additional fees apply for activities marked with a star

**ONLINE REGISTRATON OPENS APRIL 8, 2016**  
**Late registration after May 8**

**Conference Hotel**

The Westin Kansas City at Crown Center, 1 East Pershing Road, Kansas City, MO 64108  
1-800-474-4400

Located in the heart of downtown, The Westin Kansas City at Crown Center is part of Hallmark's Crown Center Plaza. This city within a city offers guests 85 acres of shops, restaurants, and theatres—all of which can be accessed from the hotel.

For the conference rate of \$149 (plus tax) for a double occupancy queen, use the custom portal at <https://www.starwoodmeeting.com/Book/SocietyforIndustrialArcheology>. If you prefer to book over the phone, call 1-888-627-8538 and mention the Society for Industrial Archeology. Rate expires May 2, 2016, or when block is filled.

**The conference block is limited.**

**Once the block is full, you will have to book at Westin's non-conference rates or at another area hotel.**

***Parking is not included.***

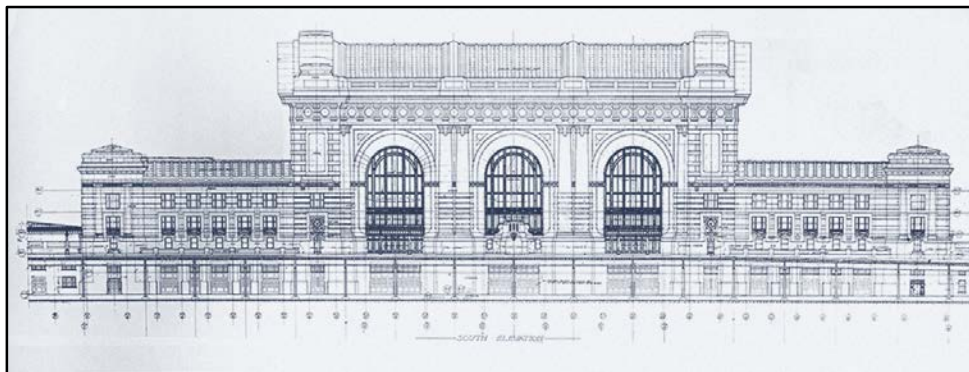
The hotel offers valet and self-parking in their on-site parking garage for \$17-\$24 per night.

**Getting to Kansas City**

Planes: Kansas City International Airport (MCI) is about 21 miles from the conference hotel. It is served by direct flights from 40 cities in the US and Canada.

There are various transportation options from the airport to the hotel. Super Shuttle offers SIA conference attendees a \$6 discount. Book online using discount code **W4WC7** at <http://groups.supershuttle.com/societyforindustrialarcheology.html>, or call 1-800-BLUE-VAN. There is a \$2 surcharge to book over the phone. Return service from the hotel to the airport departs the hotel every 30 minutes at 10 and 40 after the hour.

Trains: Amtrak's Kansas City station (KCY) is within walking distance of the hotel.



Architectural drawing of Union Station, Kansas City, Missouri, circa 1914.  
Source: [www.unionstations.org](http://www.unionstations.org)

## CONFERENCE EVENTS – Included in Registration

**NOTE:** Schedules in this brochure are *approximate*. Please watch for emails and check [www.sia-web.org](http://www.sia-web.org) and your registration packet for updated times, details, and web links.

---

**Thursday, June 2** (evening events at the Westin at Crown Center)

**5:00-6:00 PM – New Members' Welcome**

**6:00-8:00 PM – Opening Reception** – Light snacks, a cash bar, and an orientation to the history of the Kansas City area.

---

**Friday, June 3**

**Choose one of the following all-day tours** (lunch and transportation included)

**F1 – Manufacturing & Power** – (8:30-5:30) General Motors Plant, 95 acres of manufacturing area under one roof, produces a vehicle every 58 seconds; Subtropolis/Hunt Midwest, a subterranean industrial park carved out of 270-million-year-old limestone by the room and pillar method; Veolia Energy, housed in a Romanesque Revival building, this plant provides steam heat, chilled water, and electricity to KC's central business district; Power House Ballet, originally built in 1914 as a coal power plant, this National Register building is now home to the Kansas City Ballet.

**F2 – Historic Kansas City and Surrounds** – (8:00-5:00) McCormick Distilling Company, since 1856, the oldest continually operating distillery in the US; Watkins Woolen Mill, a 3-story woolen mill from the 19<sup>th</sup> century with its original textile machinery still intact; Tension Envelope, founded in 1886, the company remains one of the largest envelope manufacturers in the world. This tour travels outside of Kansas City, so expect extended bus time.

**F3 – Roasting, Brewing & Technology** – (8:30-6:00) The Roasterie coffee roaster using convection air-roasting process; Ryerson Metals, a single source supplier of metal products and processing services founded in 1842, serves aerospace, defense, oil and gas, shipbuilding, and transportation customers; A. Zahner Sheet Metal, an engineering-design consultancy, architectural metals and facades manufacturing company founded in 1897; 8<sup>th</sup> Street Tunnel, an abandoned trolley car line running underground between downtown KC and the West Bottoms district; Boulevard Brewery, one of the largest specialty brewers in the Midwest produces 600,000 barrels of beer in its 70,000 sq. ft. brew house and packaging facility.

**F4 – Goods Manufacturing** – (8:30-6:00) Faultless Starch/Bon Ami, world headquarters since 1887, manufactures laundry and household products; Ford Motor Plant, produces the F-150 and Transit models, largest car manufacturing plant in the US in terms of units produced; Vita Craft, transforms flat steel disks into cookware at 18 individual stations rather than an assembly line; The *Kansas City Star* Printing Plant, published since the 1880s, the print and distribution facility covers two city blocks and allows visitors to view printing presses in operation; Rieger Distillery, rebuilt on the grounds of the historic Heim Brewery, the facility offers a look into the science and technology of distilling.

**F5 – Historic Bridges** – (8:30-5:30) ASB Bridge, Broadway Bridge, 12<sup>th</sup> Street Trafficway, Hannibal Bridge, Truman Lift Bridge, Waddell A-Truss, Highline Bridge.

---

---

### Friday Evening, June 3

7:30-9:30 PM - Sixth Annual SIA Film Festival

---

### Saturday, June 4 – Daytime events at Westin at Crown Center

8:00–11:30 **Morning Presentation Sessions**  
Coffee and soft drinks will be available.

11:45–1:15 **Annual Business Meeting & Luncheon**

1:30–5:00 **Afternoon Presentation Sessions**

All Day **Exhibits, Posters & Book Sales**

Session topics, presentation titles, and a list of speakers will be posted on the SIA website: [www.sia-web.org](http://www.sia-web.org)

---

## OPTIONAL ACTIVITIES - extra fees may apply

### Thursday, June 2

- T1 – Aircraft** – (9:00-1:30). Pratt & Whitney aircraft manufacturing. A box lunch is provided to eat on the bus. **PLEASE NOTE: YOU MUST BE A US CITIZEN TO VISIT THE PRATT & WHITNEY AIRCRAFT MANUFACTURING SITE.** Real ID Act-compliant identification required, passport preferred.
- T2 – Museums** – (10:00-4:00). Nelson Atkins Museum of Art, Liberty Memorial and WWI Museum. Box lunch is provided.
- T3 – Harley Davidson Tour** (12:00 – 2:30). This factory tour offers a limited view of the assembly line and designated fabrication areas. Approximately one hour.
- 

### Saturday Evening, June 4

**SB – Saturday Banquet** (6:30-9:30 PM) – Dine at the Belger Craneyards.

---

### Sunday, June 5

- S-1 – Fort Leavenworth** – (8:00-12:30) Frontier Army Museum, Buffalo Soldier Memorial Park, National Cemetery. US Army Ret. Col. Douglas L. Tystad will host this tour. The Fort is an hour-long bus ride from the hotel. Bring your photo ID/passport for required ID check at gate.
- S-2 – River Tour with Healthy River Partnerships** – (9:00-1:00) Limit 15 people. A 2 ½ hour river tour of bridges along the Missouri River.
- S-3 – Walking Tour of Library District** – (10:00-12:00) led by local conference coordinator Cydney Millstein, features architectural highlights of the district.
- S-4 – Walking Tour of Freight House District** – (10:00-12:00) led by Brad Wolf, Administrator of the Landmarks Commission, features architectural and industrial highlights.

# SIA 2016 Conference Registration

Name				
Affiliation (for name badge)				
Joint Name				
Joint Affiliation				
Address				
City		State/Province		
Zip/Postal Code		Country		
Cell Phone		Other primary contact phone		
Email address				
1. Check box <input type="checkbox"/> if you wish <b>NOT</b> to share your information with other attendees 2. Is this your first SIA Conference? Yes: <input type="checkbox"/> , No: <input type="checkbox"/> 3. Check box <input type="checkbox"/> if you (or companion) may require special meals. Indicate meal restrictions:				
Member and Student Registration includes Thursday Evening Reception, one Friday Bus Tour, Saturday Presentation Sessions, and Saturday Annual Business Meeting/Luncheon. Thursday tours, Saturday banquet, and Sunday tour are optional at extra cost. All tours are space-available, first come, first served, with preference given to persons paying full registration.				
<b>CONFERENCE REGISTRATION</b> (add lines and total)				
<b>All fees are PER-PERSON. Make tour selections at top right</b>				
	#		Cost each	TOTAL
<b>SIA Member Registration</b> You must be a 2016 member. SIA's insurance requires that all tour participants be members.	@		\$ 285	
<b>Student Registration</b> Age of students under 18 : _____	@		\$ 155	
<b>Student Volunteer Registration</b> (4 hrs. assistance at registration desk)	@		\$ 100	
<b>Saturday Presentation Sessions only</b> (Includes Saturday Business Meeting & Luncheon but not Saturday Night Banquet)	@		\$ 130	
<b>Late Fee (after May 9, 2016)</b>	@		\$ 40	
<b>OPTIONAL ACTIVITIES</b>				
<b>Thursday, June 2</b>				
T1 - Aircraft 9:00 AM-12:00 PM	@		\$ 25	
T2 - Museums 10:00-4:00	@		\$ 40	
T3 - Harley Davidson 12:00-2:30	@		\$ 15	
<b>Saturday, June 4</b>				
SB SIA Banquet	@		\$ 60	
<b>Sunday, June 5</b>				
S1 - Fort Leavenworth 8:00 AM-12:00 PM	@		\$ 35	
S2 - River Tour 9:30-12:00	@		\$ 60	
S3 - Walking Tour Library Dist. 10-12	@		\$ 20	
S3 - Walking Tour Freight Dist. 10-12	@		\$ 20	
<b>REGISTRATION &amp; OPT. ACTIVITIES SUBTOTAL</b>			<b>\$</b>	

**Tours are filled based on date & time received at SIA headquarters.**

**Please indicate order of preference (1-first choice, 2 second choice, 3-third choice)**

<b>Friday Tour Preferences</b> (Included with registration)	YOU	JOINT
F1 - Manufacturing & Power		
F2 - Historic KC & Surrounds		
F3 - Roasting, Brewing & Tech		
F4 - Goods Manufacturing		
F5 - Bridges		

<b>PAYMENT SUMMARY</b>	
<b>Registration &amp; Opt. Activities</b>	<b>\$</b>
<b>SUBTOTAL</b>	
<b>SIA 2016 MEMBERSHIP DUES</b>	
2016 Renewal or new member <b>if you have not already paid your 2015 dues.</b> Mailing addresses outside the U.S. and Canada require an additional \$10 for international postage.	
Individual Membership: \$ 50	<b>\$</b>
Joint Membership: \$55	<b>\$</b>
Upgrade 2016 Individual to Joint: \$ 5	<b>\$</b>
Student Membership: \$20	<b>\$</b>
International Mailing: \$10	<b>\$</b>

<b>DONATIONS TO THE SIA</b>	
Scholarship Travel Fund Donation	<b>\$</b>
Preservation Grant Fund Donation	<b>\$</b>
<b>TOTAL PAID</b>	<b>\$</b>

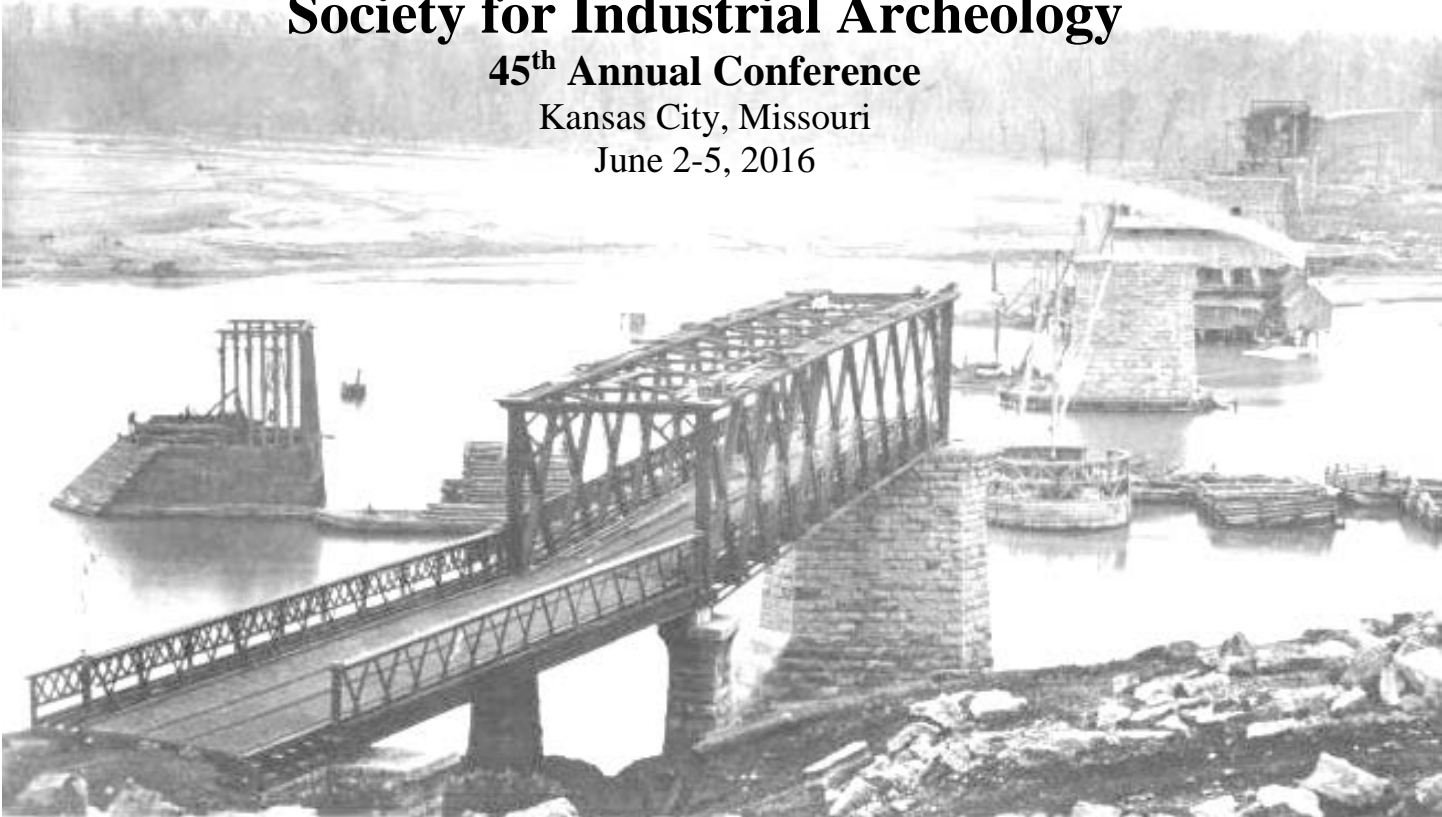
**Methods of Payment:**

- Register and pay online by credit or debit card at:  

**www.sia-web.org**  
*Register online for a \$5 discount.*
- Check or money order, payable to SIA 2015 in U.S. dollars drawn on U.S. bank, mailed with this form to:  

SIA 2016 Conference  
 Department of Social Sciences  
 Michigan Technological University  
 1400 Townsend Drive  
 Houghton, MI 49931-1295 USA





**Society for Industrial Archeology**  
**45<sup>th</sup> Annual Conference**  
Kansas City, Missouri  
June 2-5, 2016